



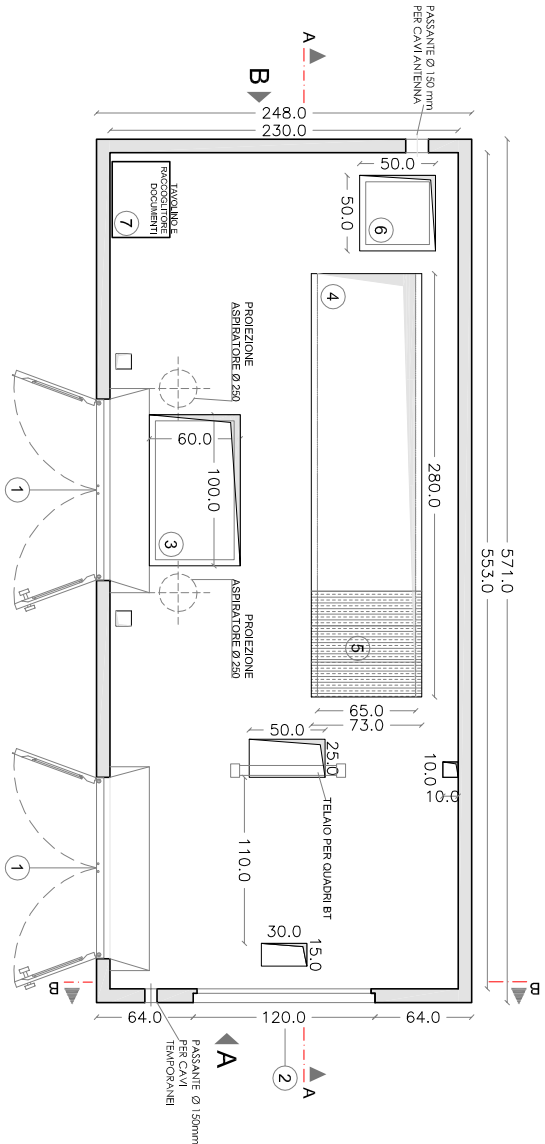
SEDE E STABILIMENTO

Viale San Francesco n.1 Nocera Inferiore (SA) Tel. 081 5173037 Fax. 081 920071
Cod.Fisc. e P.Iva 00170570659

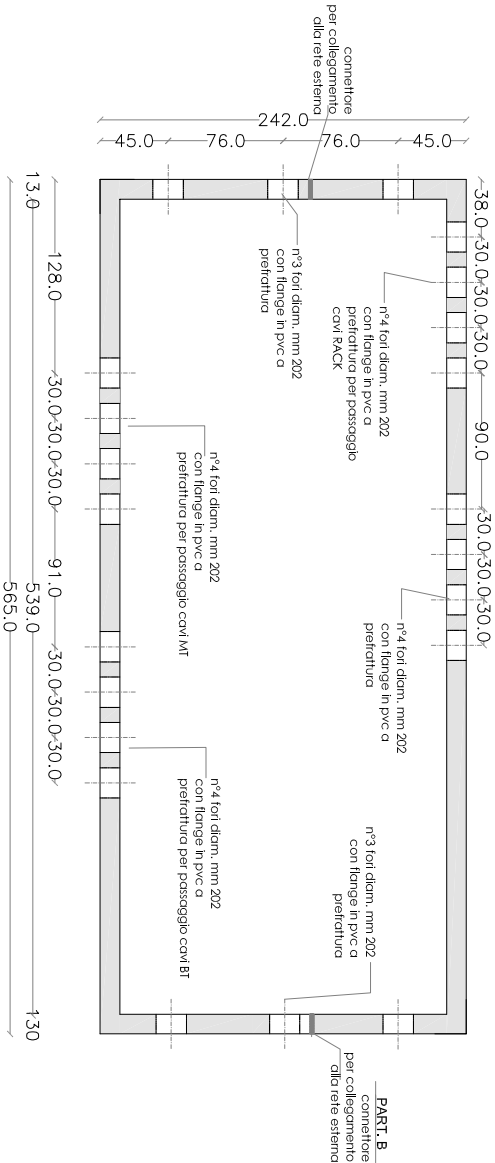
Cabina monoblocco Enel DG 2061 ed. 09
STANDARD BOX DISTRIBUZIONE

Dimensioni interne cm 553x230xh variabile min.230/max.260
Dimensioni esterne cm 571x248xh variabile min.250/max.280

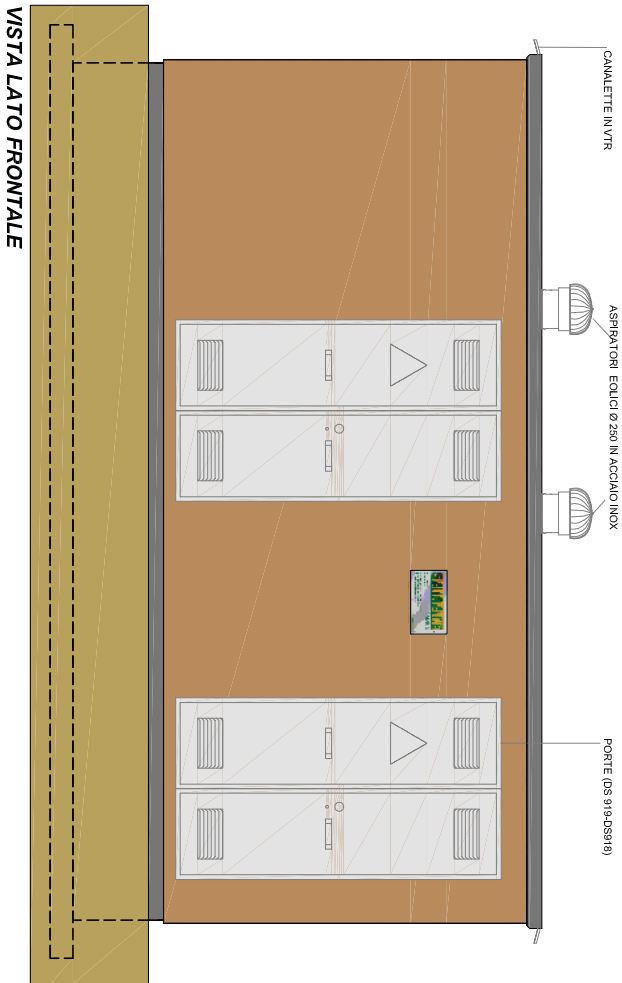
Codice prodotto
147CADG2061/9-(1-2-3)
TAV.1
Rapp. 1/50



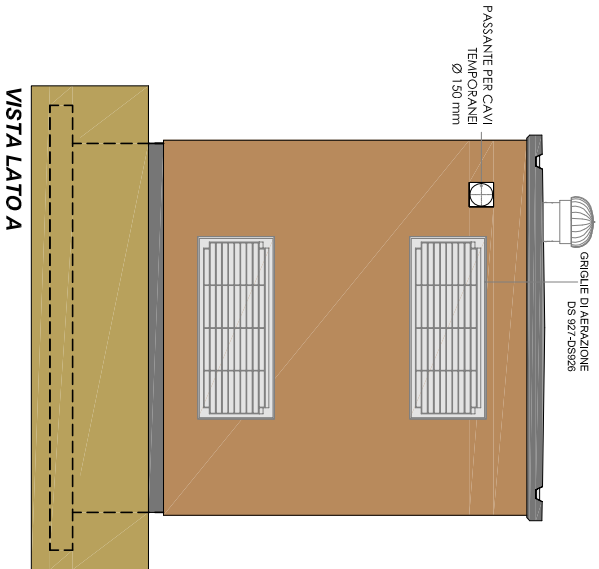
PIANTA CABINA



PIANTA BASAMENTO



VISTA LATO FRONTALE



VISTA LATO A

- LEGENDA
- 1 PORTA DUE ANTE IN VTR/ ACCIAIO INOX/ACCIAIO ZINCATO cm 120xh 215
 - 2 GRIGLIA ALTA E BASSA IN VTR/ ACCIAIO INOX/ACCIAIO ZINCATO cm 120xh 50
 - 3 PLOTTA DI COPERTURA IN VTR cm 100x 60 sp 4
 - 4 FORO PER MODULI MT ENEL
 - 5 COPERTURE IN VTR cm 72.5x 25 sp 4
 - 6 FORO PER QUADRO RACK
 - 7 TAVOLINO E PORTADOCUMENTI



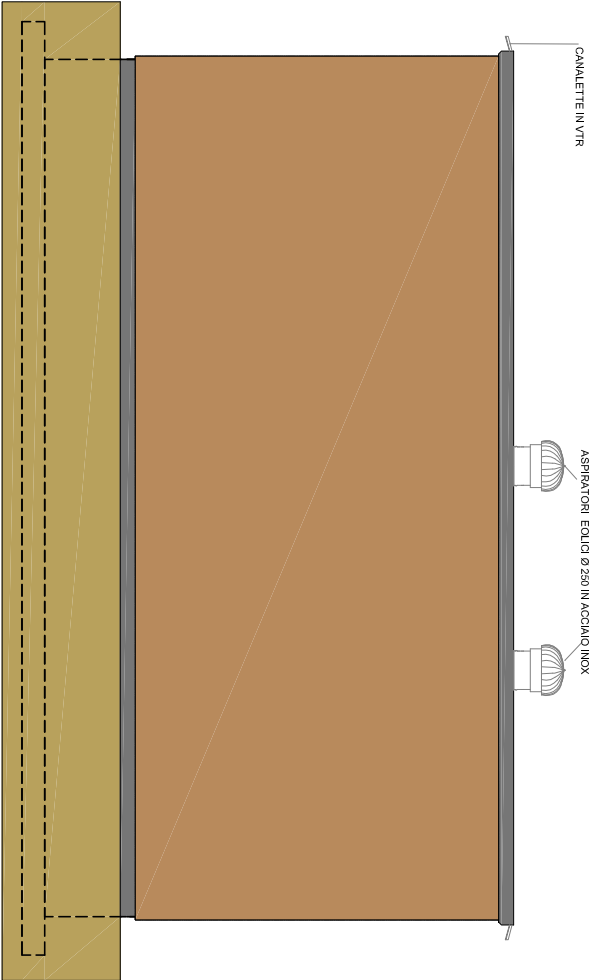
SEDE E STABILIMENTO
Viale San Francesco n.1 Nocera Inferiore (SA) Tel. 081 5173037 Fax. 081 920071
Cod.Fisc. e P.Iva 00170570659

Cabina monoblocco Enel DG 2061 ed. 09
STANDARD BOX DISTRIBUZIONE

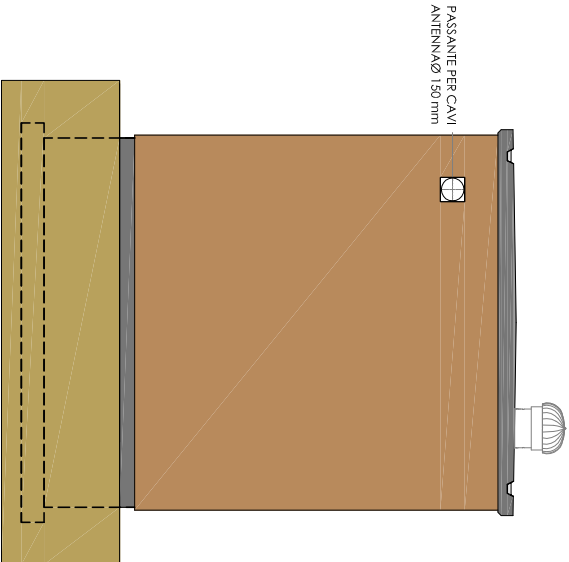
Dimensioni interne cm 553x230xh variabile min.230/max.260
Dimensioni esterne cm 571x248xh variabile min.250/max.280

Codice prodotto
147CADG2061/9-(1-2-3)

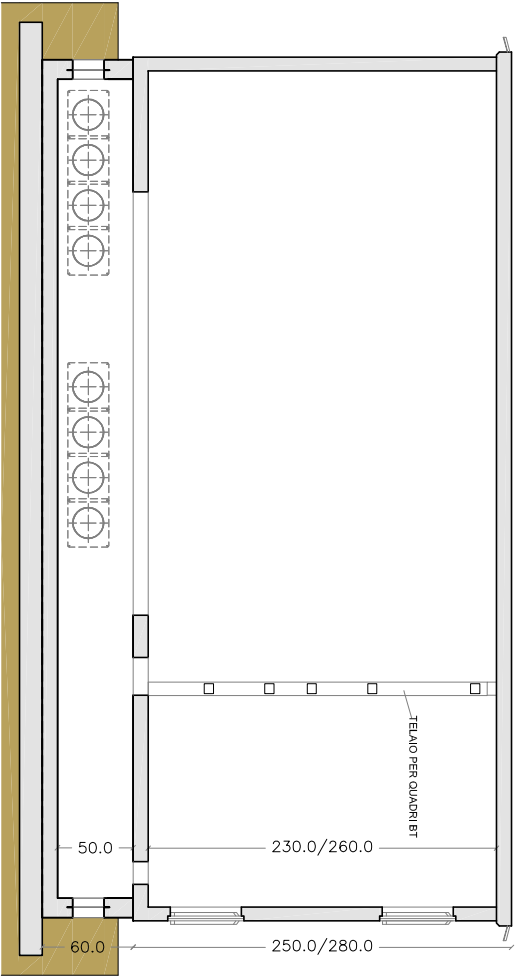
TAV.2
Rapp. 1/50



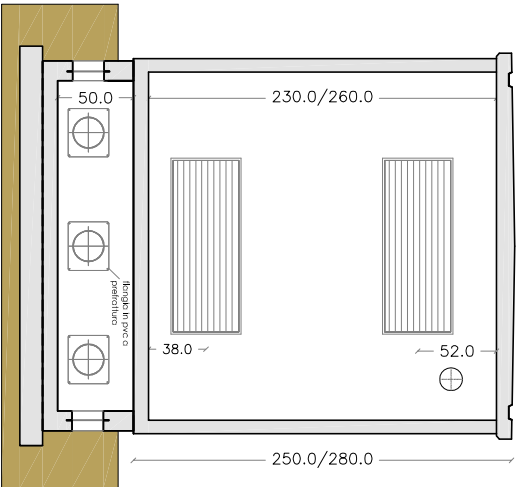
VISTA LATO RETRO



VISTA LATO B

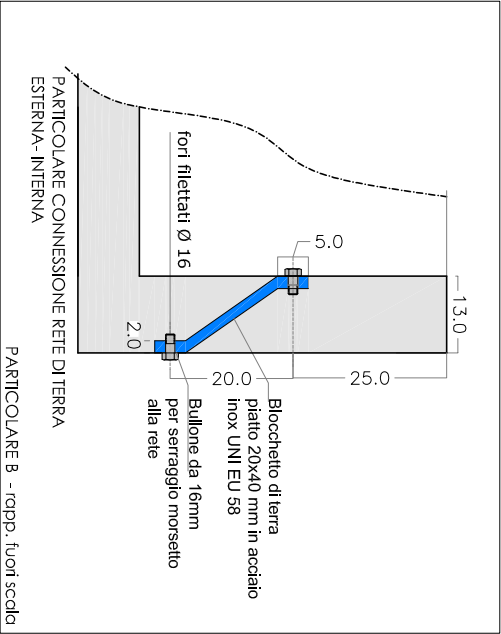


SEZIONE A-A



SEZIONE B-B

Particolare



Telaio porta quadri



Armadio Rack